

# ESPINAS Y FLORES

Newsletter of the San Diego Cactus & Succulent Society  
An affiliate of the Cactus & Succulent Society of America

Volume 52, Number 5

May 2017

## May Events

SDCSS General Meeting, May 13

Pre-Meeting Workshop - 11:00 am

Prepping for the Show by Jerry Garner

New Member Orientation - 12:30

Monthly Program - 1 - 4pm

Coffee in the Garden

May 20th, 10am - 2pm

Hosted by Brian and Sally Shepherd

## In This Month's Issue

Speaker

Some Unexpected Consequences of  
Becoming Adapted to Desert Conditions  
by James D. Mauseth

Plant of the Month

Senecio, by Terry Parr

SDCSS Summer Show & Sale - June 3rd & 4th  
Information and Volunteer Opportunities



# SAN DIEGO Cactus & Succulent Society

Executive Board

President: Chris Miller Vice President: Kelly Griffin  
Secretary: Mary Reiser Treasurer: Leslie Sheridan

Directors

Jerry Garner Antonina Lansangan Jim Reiser  
Brian Shepherd Sue Thomas Christine Vargas  
Tina Zucker

Committees & Sub Committees

Conservation: Herb Stern  
Brag table: Tina Zucker & Denise Griffin  
Plants of the Month: Don Hunt  
Summer/Winter Show: Kelly Griffin, Bill O'Daniel, Tom Knapik  
Historian: Terry Parr  
Grants: Jerry Garner  
Library: Alison Baldwin  
Exchange Plants/Seeds: Michelle Heckathorn & Sara Schell  
Annual sales: Chris Miller  
Auction & Holiday Plants: Kelly Griffin  
Show Auction Manager: Peter Walkowiak  
Monthly Plant Sales: Jim DeForrest & Lynn Elliott  
Monthly Supply Sales: George & Jerry Plaisted  
Benefit Drawing Table: Collette, Kienan, & Terry Parr  
Programs: Kelly Griffin  
Reception: Susan Hopkins & Judy Walkowiak  
Monthly Regalement: Cathy Clark  
Picnic Regalement: <OPEN>

Liaisons

Balboa Park Desert Garden: Susan Hopkins  
CSSA Affiliate Rep: <OPEN>  
SD Botanic Garden: Phyllis Flechsig  
SD Botanic Foundation: George Plaisted  
SD Floral Association: Jeanette Dutton  
SD Zoo Safari Park, Baja & Old World Gardens: May Fong Ho  
Palomar CS Society Liaison: Brita Miller

Membership & Publicity

Membership: Paul & Carol Maker  
Newsletter Editor: Sue Thomas  
Webmaster: Kirsten Higgins  
Publicity: Christine Vargas

Contact SDCSS

Membership: [membership@sdcss.net](mailto:membership@sdcss.net)  
Newsletter Editor: [newsletter@sdcss.net](mailto:newsletter@sdcss.net)

## Table of Contents

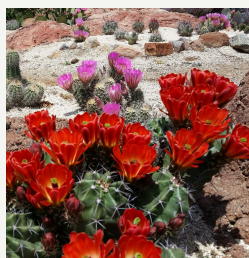
President's message .....3  
Pre-Meeting Workshop .....3  
March Program .....4  
Plant of the Month .....5  
Coffee in the Garden .....6  
Book Review .....6  
Brag Table .....7  
Summer Show & Sale ..... 8-11  
Membership .....12  
Calendar of Events .....13

### SDCSS Publicity & Advertising Guidelines

Espinas y Flores is circulated among over 700 SDCSS members online and in print. It is also made available and archived permanently, for the general public's viewing. The SDCSS offers individuals, businesses, and non-affiliated organizations, the opportunity to promote their business through paid ad space in the monthly newsletter, Espinas y Flores. Anyone interested in placing an ad may contact the SDCSS Newsletter Editor at: [newsletter@sdcss.net](mailto:newsletter@sdcss.net).

Electronic communications sent directly to our members via email is limited to Club announcements and other important information relating directly to club business and activities.

*Thank you to Kirsten Higgins for designing this month's issue of Espinas y Flores!*



Cover Photo:  
Cactus blooming in Brian and Sally Shepherd's garden

Visit this beautiful garden on May 20th, when the Shepherds host Coffee in the Garden. Details on page 6

**Correction:**

There were two plant name errors on the Brag Table Winners list in the April issue of Espinas y Flores, as noted below. They were publishing errors and not related to the accuracy of information provided by Denise Huntsman-Griffin, our Brag Table volunteer. The editor apologizes for this error.

Intermediate 1st Place cactus: Candy and Jerry Garner- *Mammillaria bombycine* (should be *Mammillaria bombycina*)  
Novice 1st Place succulent: Mary Reiser - *Haworthia reticulata* (should be *Haworthia reticulata*)

Opinions expressed in articles and editorial comments are solely the opinions of the author or the editor and do not necessarily represent the opinion of the SDCSS, the board of Directors, or the organization as a whole. All material submitted to the *Espinas y Flores* for possible publication may be edited in form and content. All material contained in the *Espinas y Flores* may be reprinted by other non-profit organizations unless permission is expressly denied in a note accompanying the article. Please send one copy of the printed material to the editor. Reproduction in whole or part by any other organization without the express consent of the editor is prohibited.



## Message from the President

Chris Miller

Summer is here in San-tee, warm and windy. I know it is early but weird weather is the reality for the year. I have already started watering. The plants are thriving; many are in bloom with more on the way. But those damn weeds are also pretty happy.

We had a nice meeting in April. Mark Fryer gave a very interesting Grafting Workshop, Leslie Sheridan took us to visit the plants at the Zoo and Jeremy Spath did a good job of taking us around the world to visit some great plants. Melanie Howe was the heroine of the day, running the cash register without Jim and Lynn, A thankless job for which we thank her profusely. April is National Volunteer Month. Our organization is founded on the concept of volunteerism. We could not be the dynamic entity that we are today without all of you who give your time to this organization. So thank you for all your efforts over the years. And don't forget to volunteer for the June Show and Sale.

We also had two lovely Coffee in the Garden events this month. The first was a visit to Wanda Mallen and Gary Vincent's large and wonderful garden, with many different scenic aspects that was enjoyed by all who attended. The second was a visit to Nancy and Reid Hoover's garden, home to a surprising variety of plants from tropical to desert, and wonderfully arranged. These two very different gardens provided plenty of design inspiration. This month, we will go to Alpine to visit Brian Shepherd's garden. We still need people to share their gardens during the coming months, if you've been thinking about hosting, please sign-up.

The May meeting is always a good one, with the Epy Society holding their sale in the large courtyard and our great speakers. Jerry Garner will do a workshop on preparing for the upcoming Summer Show; Terry Parr will give a talk on Senecios and James Mauseth will give a talk on some unexpected consequence of becoming adapted to the desert. Since I would once more like to get used to the desert heat, I hope to gain a lot from James' talk.

I look forward to seeing all of you in May. Come early because parking will be a challenge, as usual.



### Pre-Meeting Workshop: Prepping for the Show

*Join Jerry Garner at 11:00am for the Pre-Meeting Workshop held in the lunchroom in Room 101, just prior to the May General Meeting.*

The June Show and Sale is the San Diego Cactus and Succulent Society's most important botanical and social event. It is our opportunity to join with kindred spirits in a weekend of work, camaraderie, and presentation to share our fascination of succulent plants with others.

In this month's workshop, we will be focusing on preparing your plants for the show tables at the June show. We will cover the basics of entering a plant in the show. There will be a short discussion on filling out the plant entry tickets along with, where and how to find the plant category information. We will then address pot cleanliness, plant cleanliness (insect control), and plant grooming. I will finish with some basic staging tips for using top dressing, rocks, and plant-to-pot placement, to enhance the presentation of the plant. If you have a plant that you are unsure about showing, bring it to the workshop and we will work on the plant's best presentation. I will bring an assortment of simple tools that can easily be assembled into a plant grooming kit.

I hope this workshop will take some of the worries and mystery out of showing your plants, and encourage you to do so. Remember, we always urge our members to be part of OUR show. ~Jerry Garner

## Some Unexpected Consequences of Becoming Adapted to Desert Conditions

by James D. Mauseth

As cacti became adapted to desert conditions, they evolved to store water (to be succulent), to retain water (they lost their leaves), and to protect their water (they became spiny). But there were some unexpected consequences. They can use some of their stored water to entice insects to themselves (they produce nectar in unusual places). Many retained the ability to make leaves, we just don't often recognize the leaves even as we look at them. And the evolution of ribs in cacti caused several fundamental aspects of stem development to change.



### Brief Bio

I got my Bachelor degree at the University of Washington in 1970, and my PhD also from UW, in 1975. I have been a professor at the University of Texas at Austin since 1975. My research has focused on the changes in anatomy and development that occurred as the ancestors of cacti evolved and diversified and became adapted to all the types of habitats where cacti occur now. I also study other plants that have extremely modified bodies, such as certain parasitic plants that grow entirely within the bodies of their host plants. Much of my research has focused on cacti of South America.

# Succulent Senecios

by Terry Parr

*Senecio* is an extraordinarily large genus of plants, numbering more than 1500 mostly herbaceous species in that largest of all plant families, the Compositae. *Senecio* is found on all continents except Antarctica, typically at low to mid latitudes. Several species are native to San Diego County. Around 100 species are classified as succulents, occupying Africa, Madagascar, India, S.W. Europe and a few new-world forms in Mexico (Jacobsen 1974). The unifying characteristics of the genus are in the flower structure, while the body forms are highly diverse and, when viewed together, would scarcely be expected to occupy the same genus.

*Senecio* can make an excellent ground cover. The fast spreading and low lying *S. mandraliscae* is commonly seen along our freeway embankments. The smaller and more bluish *S. serpens* (Figure 1) is slower growing and makes a fine ground cover in succulent gardens without running rampant.



FIGURE 1 *SENECIO SERPENS*

*S. rowleyanus* (Figure 2) and *S. radicans*, affectionately known as "String of Pearls" and 'String of Bananas' - make excellent hanging plants with thin, thread-like stems supporting spherical or ovate leaves. Another excellent hanging plant is *S. jacobsoni*, with flat ovate leaves distributed along the hanging branches. These leaf succulents are popular and are regularly found in commercial nurseries.

*Senecio* stem succulents include the low growing and smaller species, *S. stapeliiformis* ('Peppermint Stick'; Figure 3) and *S. pendula*, with its contorted growth form, as well as the erect and larger succulent-stemmed landscape plant *S. anteuphorbium* ('Swizzle Stick'), native to Morocco.



FIGURE 2 *SENECIO ROWLEYANUS*

Several species forming small shrubs with succulent stems and leaves do well in San Diego and are

tolerant of full sun. Common ones include *S. medley-woodii*, *S. decaryi*, *S. cephalophorus*, *S. barber-tonicus*, *S. cylindricus*, *S. ficoides* and *S. crassissimus*. *S. barber-tonicus* can be seen along the sidewalk of the road leading into the zoo entrance. These species are commonly viewed



FIGURE 3 *SENECIO STAPELIIFORMIS*

in landscape arrangements and range from light green to glaucous in color, with *S. medley-woodii* having a whitish wooly covering on the leaves. A lower growing form, *S. acaulis*, has bunched thin dark green leaves.

Perhaps most striking of the succulent *Senecios* are various forms of the species *S. scaposus* and *S. haworthii*. The former adopts various leaf forms, including *S. Scaposus* var. *caulescens* and *S. scaposus* var. *addoensis*

Many enthusiasts (see Rowley, 1994) consider *S. haworthii* (Figure 4) to be the finest of the succulent *Senecios*. The leaves are enveloped in a dense skin-like cover of cottony wool, giving the plant a nearly pure white appearance. This is a popular species of limited supply that sells out quickly at Succulent Society shows.



FIGURE 4 *SENECIO HAWORTHII*

While succulent enthusiasts seldom rave about *Senecios*, it is definitely worth having a species or two mixed into your collection. To that end we have supplied some stock for you to take cuttings home with you. It's time to get started with *Senecio*!

## Literature Cited

- Jacobsen, H. 1974. *Lexicon of Succulent Plants*. 2nd Ed. Blandford Press, Ltd. 682. P
- Rowley, G. D. 1994. *Succulent Compositae*. Strawberry Press, Mill Valley, CA. 238 p.

## Coffee in the Garden Hosted by Brian and Sally Shepherd

Saturday May 20th, 10:00 – 2:00 PM  
2837 N. Victoria Dr., Alpine CA

Brian has been growing cacti since he was seven years old, first in Scotland then in California. When we bought our house in Alpine, about 18 years ago, the yard contained eucalyptus trees and weeds. Now the 1 ¼ acre is full of cacti and succulents and green houses and growing frames. We also have orange, lemon, apple and fig trees that produce amazing crops providing the weather cooperates!

Our greatest achievements over the past few years have been to get rid of a small lawn, focus on low water requirement plants and gradually install a quite simple rain water collection system. These changes have reduced our monthly water bill from anywhere from \$300 to \$400 a month down to \$50 to \$60 dollars a month.

There will be cactus and succulent plants for sale. As you may have noticed at our monthly meetings, Brian is also an accomplished artist, and there will be gorgeous prints of some of his paintings available to purchase at the event, including his most recent series of cactus paintings. Attention ladies – Sally will also have some of her jewelry available.

We will be serving coffee, cold drinks and goodies to eat, so please come and enjoy!

### Directions:

Take the Tavern Road exit off I-8 east, and make an immediate left on Victoria Park Terrace. After the road winds around, you will come face to face with the Alpine Cemetery. At that point, make a left onto Victoria Drive. Go approximately ½ mile, and our house is on the right at 2837. If the yard seems full of cars, continue on Victoria for 100 yards and make a right on Homeward Way. We are the second house on the right, and there is plenty of roadside parking. Just come in through the back gate and the wooden fence gate to the front. (If you do park on Homeward, please be careful when you leave as the corner with Victoria is pretty blind!). Call us at 619-659-9160 if you have questions.



## The Smallest Kingdom - Plants and Plant Collectors at the Cape of Good Hope by Mike and Liz Fraser

The texts of many books in our library are quite "dry," so to speak, concentrating on botanical and habitat facts, which can be informative for cultivation needs, but not necessarily engaging.

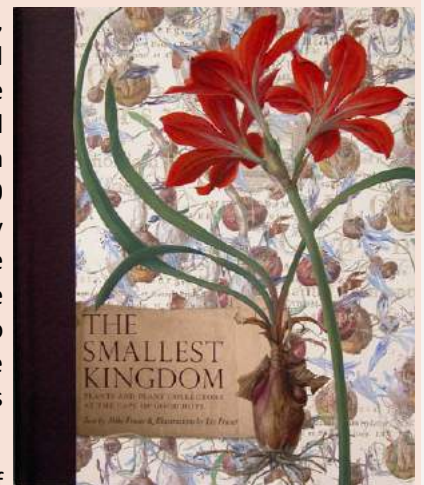
This book concentrates on a very small habitat, the narrow coastal plain of the Southernmost part of Africa, but does so in a wonderfully expansive manner.

Published in 2011, it is the product of a Scottish ornithologist and his artist wife who came to the Cape on a post-graduate research grant for a year, and lingered for another eleven. While at first it seemed to resemble the harshness of their native land, buffeted by cold seas, it became clear it was a very different environment. The book concentrates on the plants that thrive in that region, largely the bulbs that many of us know and admire, but also Proteas, Pelargoniums, and a few orchids and Stapeliads. It also touches on some insects and animals, though, surprisingly, considering the author's specialty, no birds, with the exception of the Strange Birds that were the

adventurous explorers, botanists, collectors and illustrators that were drawn to and documented the region over the course of 300 years. The treasures they pursued were the secretive, often invisible plants that exploded into floral fireworks when the season and conditions were right.

This book is a work of art, beautifully laid out with lush illustrations on every page, both contemporary and historical. It contains a generous blend of information that could engage audiences on many levels, botanical, historical and environmental. The floral illustrations alone impressed me so much I had to acquire my own copy of the book to peruse at leisure.

If you are interested in South African plants, especially bulbs, and/or botanical illustration, you should enjoy this book.



## April Brag Table Winners

### CACTUS

#### Novice

1st Beth Dargan  
*Mammillaria perezdelarosae* (1)

2nd May Fong Ho  
*Mammillaria carmenae* (2)

3rd Sue Thomas  
*Copiapoa coquimbana*

#### Intermediate

Bev Grant  
*Echinocereus triglochidiatus*  
"Claret cup" (4)

Penny Somerville  
*Rebutia narvaecensis* (5)

Alison Baldwin  
*Notocactus uebelmannianus*

#### Advanced

Kelly Griffin  
*Copiapoa cinerea* (7)

Brian Shepherd  
*Strombocactus disciformis* (8)

Mark Fryer  
*Gymnocalycium mihanovichii*



### SUCCULENTS

#### Novice

1st Sue Thomas  
*Haworthia pumila* (10)

2nd Sue Thomas  
*Crassula pubescens* ssp. *rattrayi* (11)

3rd Rebecca Berkendas  
*Echeveria* cv. "Cubic Frost" (12)

#### Intermediate

Bev Grant  
*Dudleya brittonii* (13)

Bev Grant  
*Euphorbia bupleurifolia*

Bev Grant  
*Aloe deltoideodonta* x *rauhii* (15)

#### Advanced

Kelly Griffin  
*Agave titanota*

Candy and Jerry Garner  
*Lachenalia liliflora*

Kelly Griffin  
*Aloe aculeata* x *erinacea* (18)



# San Diego Cactus & Succulent Society



## 2017 Summer Show & Sale

**Saturday, June 3rd & Sunday, June 4th**  
**Room 101 & Courtyard**  
**Casa del Prado, Balboa Park**

**Free!**  
Public Welcome

**Sale: Large Variety of Interesting Plants**

Saturday, 10:00 - 5:00 and Sunday, 10:00 - 4:00  
"Members Only" shopping, Saturday 9:00 - 10:00

**Show: Beautiful Specimens on Display**

Saturday, 10:00 - 3:00 and Sunday, 10:00 - 4:00

**Auction: Bid on World Class Plants**

Silent Auction: Sat-Sun & Live Auction - Sun at 2:00 pm





# San Diego Cactus and Succulent Society's Annual Summer Show & Sale - JUNE 3-4, 2017

## Show Rules

The show is open to anyone who grows succulent plants. There is no limit to the number of entries per class or the number of classes entered, though no entry can be entered in more than one class. All property shall be marked with the owner's name, not visible to the judges. The exhibitor must have grown the plant for at least six months.

All entries must have properly filled entry cards and must be entered in the appropriate Division and Class to be eligible for awards. Exhibitors are responsible for placing these items with their entries. For the best plant grown from seed, the exhibitors must have raised the plant themselves. Plants may be species or hybrids. Hybrids may be exhibited in the class of either parent. Grafted plants will be accepted in any class, though awards for grafts will be selected from Division IV. Read the notes below the Plant Entry Classification Schedule.

Entries must be clean, healthy, pest-free, and dry. Remove Plant Name Tags in pots (except for collections and displays). Awards must remain with exhibits until the close of the show. Classes with few entries may be

combined. The show committee reserves the right to reject plants or exhibits and to readjust entries for the good of the show. Show hours must be followed. The San Diego Cactus and Succulent Society will exercise due caution in safeguarding exhibits. However, SDCSS cannot assume responsibility for loss of property. Entries are judged against perfection. The judges' decisions are final. In the case of disputes and/or ties, the Show Chair (s) or if the Chair's plants are involved, the Head Clerk, shall make the final decision.

TROPHIES AND PLAQUES are perpetual, except the educational and novice awards. Winners will receive a hand-crafted pot and a certificate suitable for framing. First, second and third place ribbons will be awarded in each class; however, should the judges feel that a first, second, or third place is not merited, no awards will be given. To receive the CSSA Award, two or more educational displays must be entered. Judges, Club President, and Show Chairman will each award two Rosettes to their favorite plants.

### CACTUS

Best Cactus	Phillip Corliss Plaque
Best Novice Cactus	SDCSS Plaque
Best Epiphytic Cactus Plant	William & Ruth Nelson Trophy
Best Mammillaria	Elibet Marshall Trophy
Best Opuntieae	James & Shirley Berry Trophy

### SUCCULENTS

Best Succulent	Ruby Falk Plaque
Best Novice Succulent	SDCSS Plaque
Best Agave	Doris Rake Plaque
Best Aloe	Barbara Jeppe Trophy
Best Bursera	Jeff Harris Trophy
Best Echeveria	Oliver & Sophie Loyland Trophy
Best Euphorbia	Russell & Lydia Evans Cup
Best Mesem	Samuel & Adela Markey Trophy
Best Pelargonium or Sarcocaulon	Wilna Johnson Trophy
Best Sansevieria	Richard G. Latimer, Sr. Trophy

### CACTUS OR SUCCULENTS

Best Baja Plant	Richard G. Latimer, Jr. Memorial Trophy
Best Graft	Bob & Suzanne Taylor Trophy
Best Mexican Plant in Show	Dudley B. Gold Trophy
Best Plant Grown From Seed	Tegelberg Family Plaque
Rarest Plant in the Show	Terry & Collette Parr Trophy
Best San Diego County Succulent	Julianne Rice Trophy
Best Miniature	Monte & Mary Woodworth Plaque
Best Pachycaul or Caudiciform	H. Warren & Virginia Buckner Trophy
Best Succulent Bonsai	Rudy & Teresita Lime Trophy
People's Choice Award	Rose D'Attilio Memorial Plaque

### DISPLAYS, EXHIBITS AND HIGH POINTS

Best Educational Display	CSSA Award
Best Exhibit	Reuben Vaughan Plaque
Most Artistic Display	Walter & Hazel Scott Plaque
High Points 25 or fewer entries	SDCSS Plaque
High Points 50 or fewer entries	James & Shirley Berry Trophy
Sweepstakes Trophy	Ronald & Marcia Monroe Trophy

Set-up times: Fri. June 2, 12 - 8 and Sat. June 3, 7 - 8:30 AM  
*for out of town participants only.*

Show times: Sat. June 3 10 - 3 Sun. June 4, 10 - 4

Sales times: Sat. June 3, 10 - 5, Sun. June 4, 10 - 4.

SDCSS Members-Only Sale: Sat. June 3, 9 - 10

### AUCTION

Members may submit plants to an Auction to be held Sunday June 4 at 2pm. Entries accepted till noon Sunday. Owners may donate their plants or chose to retain 70% of the sale price.

### JUDGING SCALE - SPECIMENS, COLLECTIONS AND DISPLAYS

Condition 70%, Staging 15%, Size & Maturity 10%, Nomenclature 5%

### EDUCATIONAL DISPLAY

Two or more entries must be exhibited for CSSA award. Educational Value 80%, Staging & Originality 20%.

### AWARDS POINT SYSTEM

Divisions I, II and IV, 1<sup>st</sup>-3 pts., 2<sup>nd</sup>-2 pts., 3<sup>rd</sup>-1 pt., Division III, 1<sup>st</sup>-7 pts., 2<sup>nd</sup>-5 pts., 3<sup>rd</sup>-3 pts. Division V, 1<sup>st</sup>-12 pts., 2<sup>nd</sup>-10 pts., 3<sup>rd</sup>-8 pts.,  
Plaques and Trophies: 10 pts., Rosettes: 5 pts.

### SHOW COMMITTEE

**Show Chair:** Kelly Griffin **Head Clerk:** Susan Hopkins **Luncheon:** Pam Badger  
**Sales Chair:** Chris Miller **Sales Manager:** Terry Parr

### THE SAN DIEGO CACTUS AND SUCCULENT SOCIETY

P. O. Box 33181, San Diego, California 92163-3181, is a public service and educational (nonprofit tax exempt) organization. Your donations are graciously accepted.

**PLANT TAGS ARE UNCHANGED. PICK THEM UP AT THE APRIL OR MAY MEETING OR AT THE SHOW**

**ENTRY NOTES:** PLEASE USE THE MOST CURRENT CLASSIFICATION SCHEDULE. Classes 1-116 (except for 44,105 and 108-111) are divided into two pot sizes: **A and B** (A: Width plus Length = 10 inches and under; B: W+L over 10). Note that **one** plant per container is allowed in these classes.

Three categories for competing entries are as follows: **GREEN** cards for exhibitors that have won 10 or less blue ribbons in a recognized cactus and succulent show. **YELLOW** cards are for participants that have won more than 10 blue ribbons. **BLUE** cards are for vendors and those that wish to compete against them. Awards will be selected from any category. **WHITE** cards are for plants entered non-competitively, for show only.

## 2017 SDCSS Show Plant Categories

## DIVISION I - CACTI

South American Cacti

- 1 *Blossfeldia, Cintia, Frailea*
- 2 *Copiapoa*
- 3 *Denmoza, Matucana, Oroya*
- 4 *Discocactus, Melocactus*
- 5 *Echinopsis, Lobivia, Soehrensia*
- 6 *Eriosyce, Neochilenia, Neoporteria*
- 7 *Gymnocalycium* - clumping
- 8 *Gymnocalycium* - solitary
- 9 *Opuntioids*
- 10 *Parodia, Notocactus*
- 11 *Rebutia, Weingartia*
- 12 *Sulcorebutia*
- 13 Tube Flowered *Ceroids*
- 14 *Uebelmannia, Buiningia*
- 15 Wide Flowered *Ceroids*

North American Cacti

- 16 *Acharagma, Coryphantha, Escobaria*
- 17 *Ancistrocactus, Pediocactus, Sclerocactus*
- 18 *Ariocarpus*
- 19 *Astrophytum*
- 20 *Aztekium, Epithelantha, Obregonia, Pelecyphora, Strombocactus*
- 21 *Echinocactus*
- 22 *Echinocereus* - pectinate spines
- 23 *Echinocereus* - straight spines
- 24 *Echinofossulocactus, Stenocactus*
- 25 *Ferocactus*
- 26 *Gymnocactus, Neolloydia, Turbinocarpus*
- 27 *Hamatocactus, Leuchtenbergia*
- 28 *Opuntioids*
- 29 *Thelocactus*
- 30 Wide Flowered *Ceroids*

Genus Mammillaria

- 31 Subgenuses *Cochemiea, Dolichothele, Mammillopsis, Mammilloidia, Oehmea*

Subgenus Mammillaria

- 32 Series *Ancistracanthae*
- 33 Series *Decipientes, Heterochlorae, Proliferae*
- 34 Series *Lasiacanthae*
- 35 Series *Leptocladodae, Sphacelatae*
- 36 Series *Leucocephalae, Mammillaria, Polyedrae*
- 37 Series *Longiflorae*
- 38 Series *Polyacanthae*
- 39 Series *Stylothelae* Group *Bombycina*
- 40 Series *Stylothelae* Groups *Crinita, Glassii, Oteroi*
- 41 Series *Supertextae*

Other Cacti

- 42 Crested Cacti
- 43 Epiphytic Cacti
- 44 Miniature Cactus, less than 3 inches
- 45 Monstrose Cacti
- 46 *Pereskia*
- 47 Variegated Cacti

## DIVISION II - SUCCULENTS

Euphorbias - African

- 48 *Anthacantha* group
- 49 *Dactylanthus, Esula, Polygonae, Pseudoeuphorbium, Tetracanthium, Treisia, Triacanthium* and *Trigona* groups and *Geophytes*
- 50 *Grandifoliae* group
- 51 *Medusae*, Eastern & Western cape
- 52 *Medusae persistent peduncle, Pseudomedusa*
- 53 *Meleuphorbia* group
- 54 *Scolopendriae*

Euphorbias - Madagascar

- 55 *Ankarensis* group, prostrate stems and shrub type
- 56 *Ankarensis* group, with caudex
- 57 *Bosseri* and *Tirucali* groups
- 58 *Lacanthus lophogona, Lacanthus viguieri, Pedilanthioides* and *Perrieri* groups

Euphorbias - New-WorldOther Euphorbiaceae

- 60 *Agaloma* group
- 61 *Jatropha, Pedilanthus*
- 62 *Monadenium*

Aizoaceae

- 63 *Conophytum*
- 64 *Lithops*
- 65 *Aloinopsis, Argyroderma, Fenestraria, Pleiospilos*
- 66 *Mestoklema, Trichodiadema*

Apocynaceae

- 67 *Adenium*
- 68 *Pachypodium*, Africa
- 69 *Pachypodium*, Madagascar

Asclepiadaceae

- 70 *Caralluma, Hoodia, Huernia, Pseudolithos, Stapelia*
- 71 *Ceropegia, Cynanchum, Hoya, Sarcostemma*
- 72 *Fockea, Petopentia, Raphionacme*

Crassulaceae

- 73 *Aeonium, Sedum, Sempervivum*
- 74 *Cotyledon, Tylecodon*
- 75 *Crassula, Adromischus*
- 76 *Dudleya*
- 77 *Echeveria*
- 78 *Kalanchoe*
- 79 *Pachyphytum, Graptopetalum, Tacitus*

Liliaceae

- 80 *Aloe*, African
- 81 *Aloe*, Madagascar
- 82 *Aloe* hybrids
- 83 *Agave*
- 84 *Astroloba, Gasteria*
- 85 *Beaucarnea, Calibanus, Dracaena, Yucca*
- 86 *Haworthia*
- 87 *Haworthia* hybrids
- 88 *Sansevieria*

## 2017 SDCSS Show Plant Categories (Cont.)

### Other Succulent Families

- 89 *Asteraceae*
- 90 *Bromeliaceae*
- 91 *Caudiciforms and Geophytes*
- 92 *Cucurbitaceae*
- 93 *Didiereaceae*
- 94 *Fouquieriaceae*
- 95 *Geraniaceae*
- 96 *Moraceae*
- 97 *Pachycauls, New World*
- 98 *Pachycauls, Old World*
- 99 *Passifloraceae*
- 100 *Portulacaceae*
- 101 *Vitaceae*

### Other Succulent Classes

- 102 Bulbs
- 103 Cycads
- 104 Orchids
- 105 Miniature Succulent, less than 3 inches
- 106 Crested, Monstrose Succulents
- 107 Variegated Succulents

\* Dish Gardens - The combining of one or more plants for a scene or theme

\*\* Anything Goes -The creative use of succulent plants, pots and other media

\*\*\* Collections - A set of 6 - 10 different specimens that are related by a common theme, genus, form, color or other character

### DIVISION III - COLLECTIONS AND ARRANGEMENTS

- 108 Cactus Collections\*\*\*
- 109 Succulent Collections\*\*\*
- 110 Dish Gardens\*
- 111 Anything Goes\*\*

### DIVISION IV - SPECIALTIES COMBNING CACTI AND SUCCULENTS

- 112 San Diego County Succulent
- 113 Baja, Mexican Succulent
- 114 Grafted Succulent
- 115 Seed grown by exhibitor
- 116 Succulent bonsai

### DIVISION V - DISPLAYS

- 117 Displays and Exhibits

### DIVISION VI - ART

- 118 Paintings
- 119 Photography



Leslie Sheridan volunteered to do an educational presentation on succulents at a senior community sponsored by the Pacific Southwest Community Development Corporation.

\*\*The Suggestion Box has received a makeover, courtesy of ———. Don't be shy—if you have a suggestion on how the club can do even better, let us know!\*\*



### **We Need You! Volunteer Opportunities:**

**Summer Show/Sale Volunteers:** Our big event will be here before you know it and we will need plenty of helping hands! The turnout of 50+ volunteers for the Spring Show/Sale was amazing and we hope to beat this for the even larger Summer Show.

**Newsletter Editor:** An amazing opportunity to be creative, learn new skills, make lots of friends, and get involved. No prior experience is necessary, just a basic comfort level with computers. The current editor will train you.

**Library Assistant:** Do you love books? Do you love books on cactus and succulent plants? Well, this is the job for you! We are looking for volunteers to assist in the organization and checking in/out of books during meetings.

**Member Contact Information**

As an SDCSS member, you are provided with current and important updates regarding upcoming events and club information. You also receive a direct link to the monthly newsletter. In order for us to reach you, we need to make sure your contact information is always current.

Please let us know if there has been a change to your phone, home address, or email address. You may inform us by email: membership@sdcss.net, or online: [http://sdcss.net/sdcss\\_014.htm](http://sdcss.net/sdcss_014.htm)

We value and respect your privacy. Your contact information will not be shared with a third party, nor will it be sold or used for purposes other than for Club business and announcements.

Replacement club ID Badges and Membership Cards are available via the club website: [http://sdcss.net/sdcss\\_013.htm](http://sdcss.net/sdcss_013.htm), or you may email: membership@sdcss.net. Replacement Badges and Cards are \$3.00 each.

**We Need You! Volunteer Opportunities:**

**Summer Show/Sale Workshop Coordinator**  
 We need someone to manage the Summer Show and Sale workshops which will be held on Saturday afternoon. There will be 5-6, 30 minute workshops on various subjects. The Coordinator will schedule the presenters prior to the event, manage the setup, and coordinate on the date of the event.

**Summer Show/Sale Volunteers**  
 Our big event will be here before you know it and we will need plenty of helping hands! The turnout of 50+ volunteers for the Spring Show/Sale was amazing and we hope to beat this for the even larger Summer Show.

**Library Assistant**  
 Do you love books? Do you love books on cactus and succulent plants? Well, this is the job for you! We are looking for volunteers to assist in the organization and checking in/out of books during meetings.

**SDCSS MEMBERSHIP APPLICATION / RENEWAL FORM**

Dues are \$15.00 per year per individual, and \$5.00 per year for each additional household member. The Newsletter is emailed. Mailed paper copies are available for an additional \$10 a year. Each member has all the rights and benefits of the organization. **Please fill in all blanks and PRINT CLEARLY! Thank you!**

Type of Membership (please check one):                      New \_\_\_\_\_ Renewal \_\_\_\_\_

Annual Membership Dues (E-mail Newsletter):            \$15.00 \_\_\_\_\_

Add USPS delivery (Paper Newsletter):                    \$10.00 \_\_\_\_\_

Annual Dues – International (Paper):                        \$30.00 \_\_\_\_\_

Additional Household Member(s) each:                        \$ 5.00 \_\_\_\_\_

Amount Enclosed:    \$ \_\_\_\_\_

Member Information: (Please PRINT to fill in ALL blanks below!)

Name: \_\_\_\_\_

Address: \_\_\_\_\_

City and State: \_\_\_\_\_ Zip + 4: \_\_\_\_\_

Phone Number: (\_\_\_\_\_) \_\_\_\_\_ Cell/FAX: (\_\_\_\_\_) \_\_\_\_\_

Email Address: \_\_\_\_\_

Additional Household Members: \_\_\_\_\_

Do you wish to receive E-mail notifications of Club events and issues? Yes \_\_\_\_\_ No \_\_\_\_\_

Mail this form or a copy, along with a check or money order in US Funds, payable to SDCSS to:

SDCSS Membership Dept, c/o Paul Maker  
 1245 San Pablo Drive, San Marcos, CA 92078

## 2017

## Upcoming Cactus and Succulent Events

- Apr 29     Huntington Plant Sale 1 - 5 pm  
Huntington Botanical Gardens, 1151 Oxford Road, San Marino CA, Info: (626) 405-3504
- May 6-7     Sunset Cactus And Succulent Society Show And Sale Veterans Memorial Center  
Garden Room, 4117 Overland Ave., Culver City, CA, Info. 310-822-1783
- May 7     South Bay Epiphyllum Society Show And Sale, 9am - 4pm  
South Coast Botanical Gardens, Info. 310-833-6823
- May 12-13   Gates Cactus And Succulent Society 35Th Show And Sale, 9-4:30 pm  
Land Scapes Southern California Style, 450 E. Alessandro Blvd., Riverside, CA, Info. (951) 360-8802
- May 20-21   Long Beach Cactus Club Plant Show And Sale, 10am - 4pm  
Rancho Los Alamitos, 6400 Bixby Hill Road, Long Beach, CA, Info: (562) 631-5876
- May 27-28   Central Coast Cactus & Succulent Society Annual Show & Sale, 10am - 4pm  
Ludwick Center, 864 Santa Rosa, San Luis Obispo, CA, Info: (805) 237-2054, [www.centralcoastcactus.org](http://www.centralcoastcactus.org)
- Jun 3-4     [San Diego Cactus and Succulent Society Summer Show & Sale](#)  
[Balboa Park, Room 101 Balboa Park, San Diego, CA Info: \(858\) 382-1797](#)
- Jun 10-11   Los Angeles Cactus And Succulent Society Plant Show And Sale, June 10th 9am-5pm - June 11th 9am-3pm  
Sepulveda Garden Center, 16633 Magnolia Blvd, Encino, CA, Info: [www.lacss-show.com](http://www.lacss-show.com)
- Jun 30-Jul 2   CSSA Annual Show And Sale—Huntington Botanical Gardens  
1151 Oxford Road, San Marino CA, Info: (626) 405-3504, <http://www.cssashow.com/>  
Plant Sales Start June 30 - July 2. Show Opens July 1st - July 2
- Jul 20-22   Orange County Cactus And Succulent Society Summer Show And Sale July 20 6-8pm, July 21 9am-7pm, SAT. 22ND 9-5pm  
Anaheim United Methodist Church, 1000 S. State College Blvd., Anaheim, CA, Info: (949) 212-8417
- Jul 26-31   CSSA's 37th Biennial Convention  
Tempe Mission Palms Hotel, Tempe, AZ, Info: <http://cssaconvention.com/>
- Aug 12-13   32nd Annual Intercity Show And Sale, 9am-5pm Daily  
The Los Angeles County Arboretum, 301 N. Baldwin Ave., Arcadia, CA  
Info: Call Tom Glavich (626) 798-2430 or Artie Chavez (818) 482-8795
- Sept 2     Huntington Botanical Gardens Succulent Symposium, All Day  
Huntington Botanical Gardens, 1151 Oxford Road, San Marino CA, Info: (626) 405-3504
- Sept 24     Long Beach Cactus Club Annual Plant Auction, 12-5pm  
Rancho Los Alamitos, 6400 Bixby Hill Road, Long Beach, CA, Info: (562) 631-5876
- Oct 7-8     Bakersfield Cactus And Succulent Society Show & Sale, Sat 10am-5pm - Sun 11am-3pm  
St. Paul's Church, 2216 17Th Street, Bakersfield, CA 93304, Free Admission & Parking, Info (661)-831-8488
- Oct 28-29   Palomar Show and Sale, Sat 9am-5pm, Sunday 10am-4pm  
San Diego Botanic Gardens, 230 Quail Gardens Road, Encinitas, CA, Info: [britamiller1@gmail.com](mailto:britamiller1@gmail.com) (858) 776-7216
- Nov 4-5     San Gabriel Cactus And Succulent Society Show and Sale, 9am-4pm both days  
The Los Angeles County Arboretum, 301 N. Baldwin Ave., Arcadia, CA  
Info: Manny Rivera (626) 780-6957 or John Matthews (661) 714-1052
- Nov 11     SDCSS Members: [Due to the unavailability of our normal meeting venue, the club Summer Picnic will be held in November.](#)  
[San Diego Botanic Gardens, 230 Quail Gardens Road, Encinitas, CA](#)
- Dec 9     SDCSS Holiday Party  
[Balboa Park, Room 101 Balboa Park, San Diego](#)
- [2017 SDCSS General Meeting Schedule](#)  
[April 8, May 13, July 8, August 12, September 9, October 14](#)